

# Upper Hale Cemetery

Farnham

## Annex 2 to Appendix C





Graduate Landscapes

# CONCEPT A THE FOLLY

## FOLLY DEFINITION:

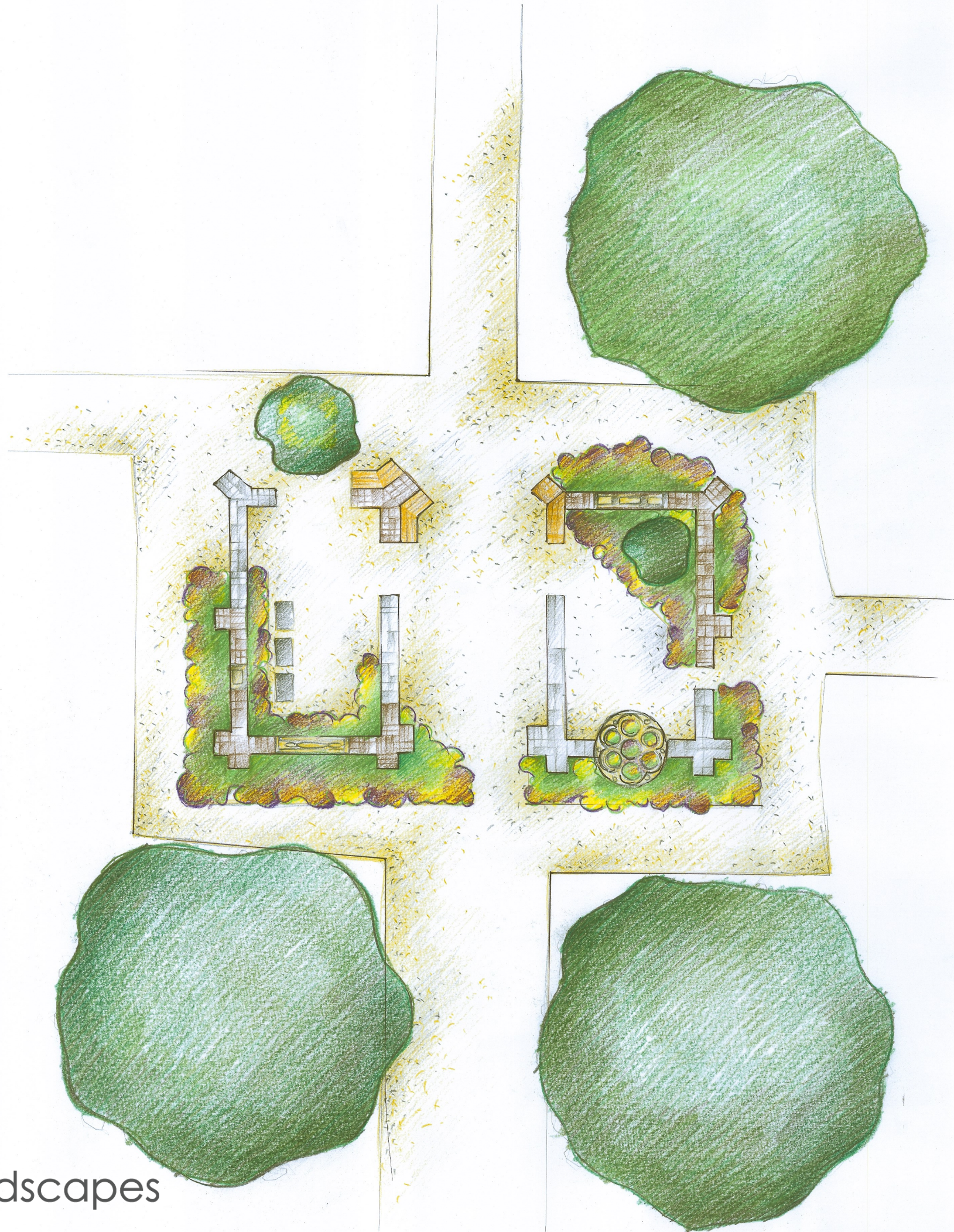
*"In architecture, a folly is a building constructed primarily for decoration, but suggesting through its appearance some other purpose, or of such extravagant appear once that it transcends the range of usual garden buildings"*



GOLD  
MEDAL





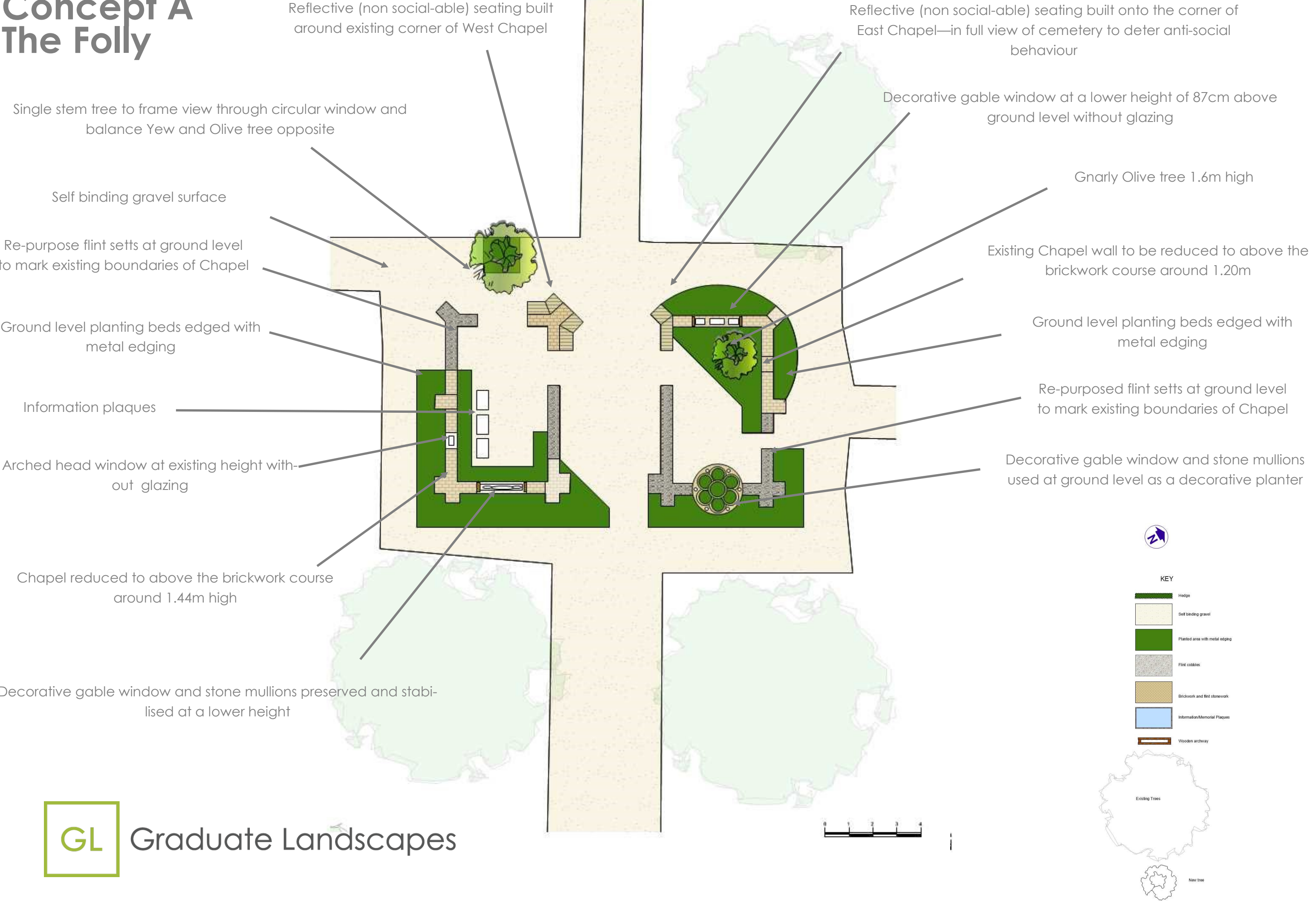


Graduate Landscapes

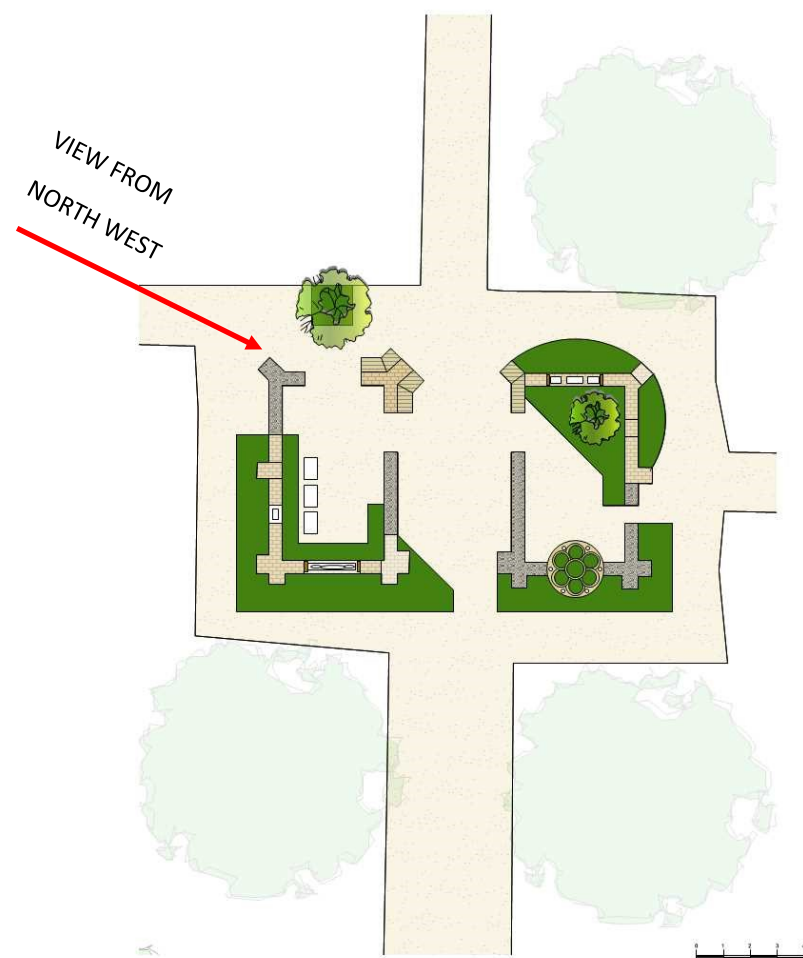
Concept A  
The Folly



# Concept A The Folly







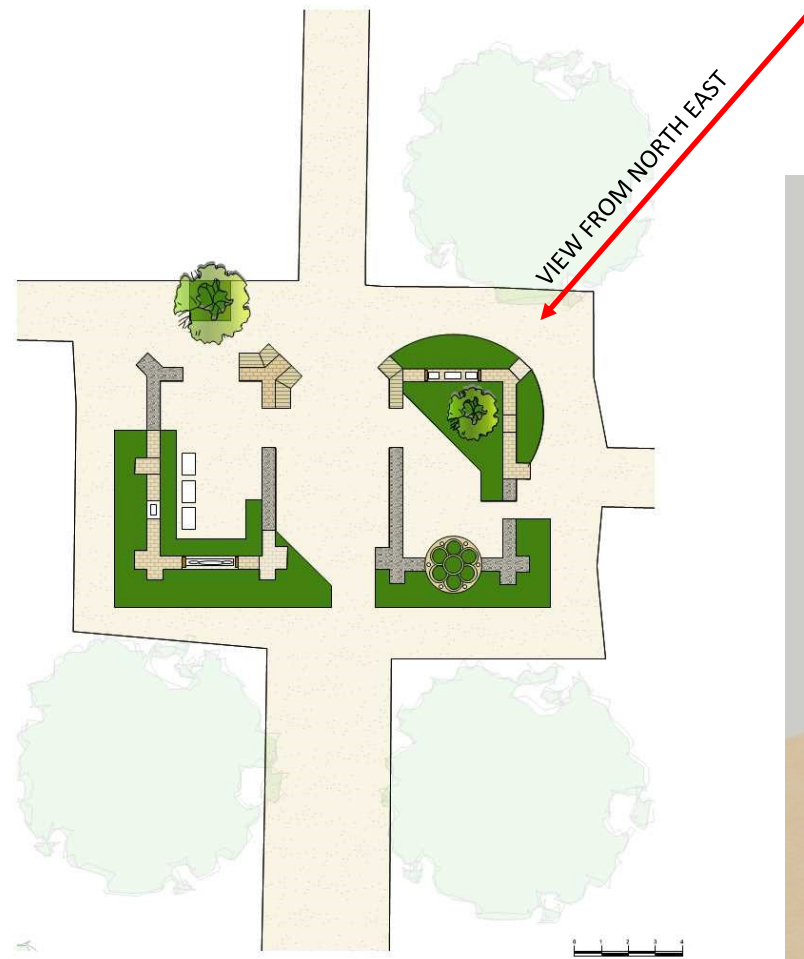
View of 'The Folly' from the North West corner



Graduate Landscapes

**Concept A**  
**The Folly**





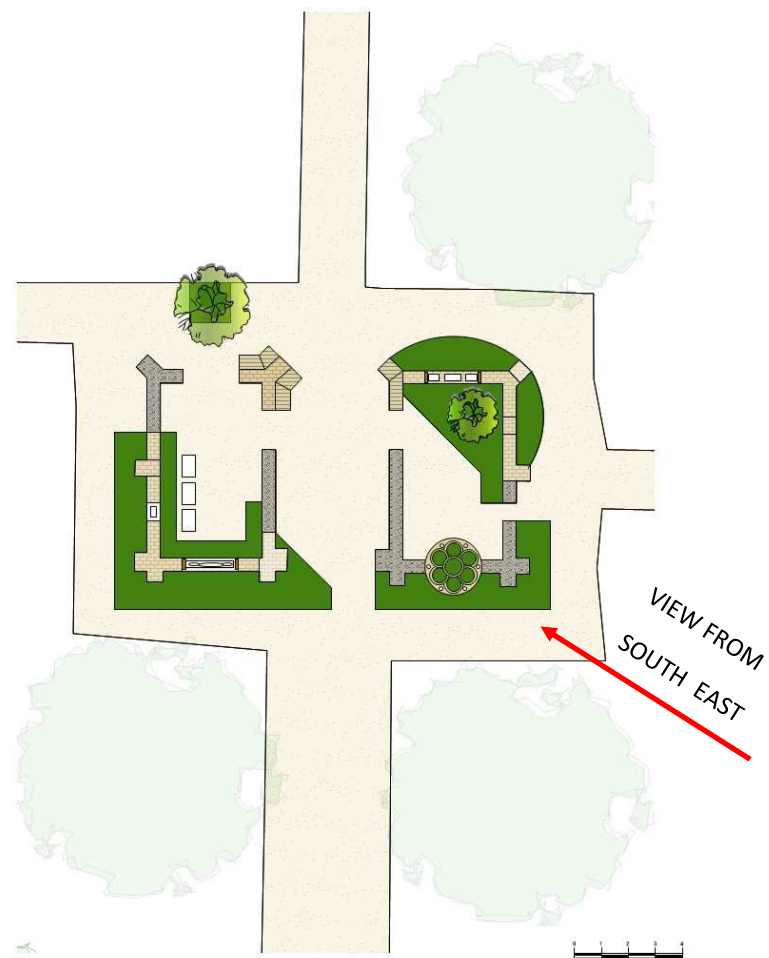
View of 'The Folly' from the North East corner



Graduate Landscapes

**Concept A**  
**The Folly**





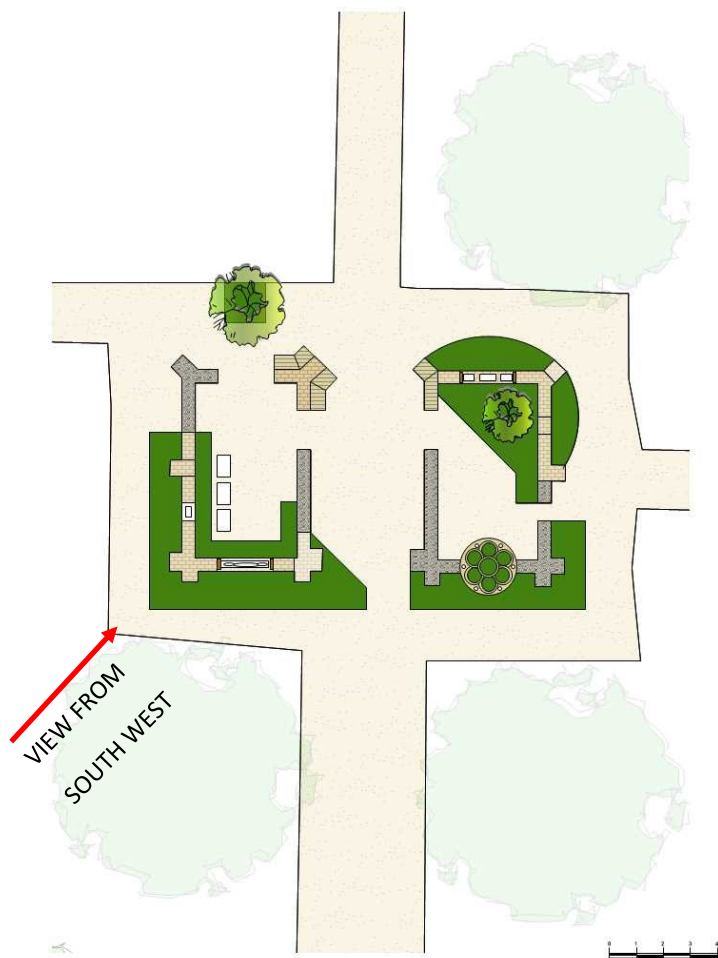
View of 'The Folly' from the South East corner



Graduate Landscapes

Concept A  
The Folly





View of 'The Folly' from the South West corner



Graduate Landscapes

**Concept A**  
**The Folly**



# Self binding gravel



## Metal Edging



Graduate Landscapes



# Information Plaques



Historical information on the columns



Possible memorial to Covid victims on the columns

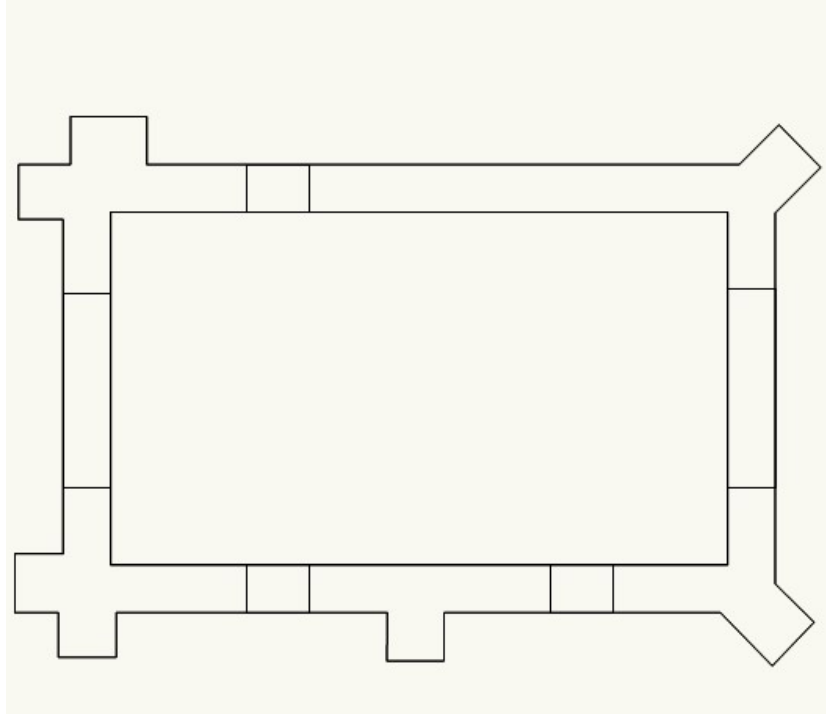
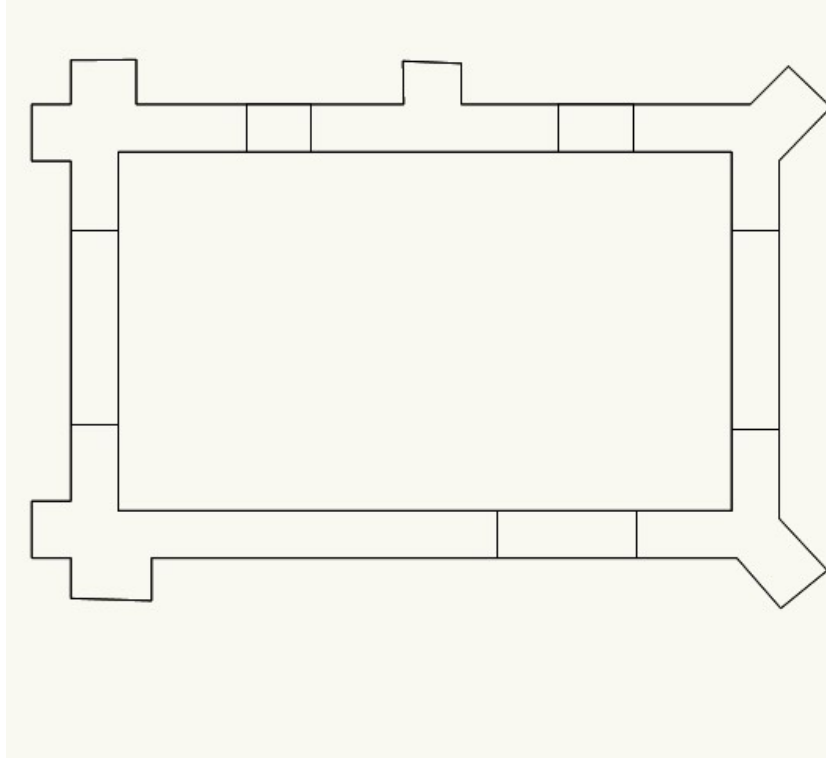


Antique style stainless steel information plaque on the Hale History Project



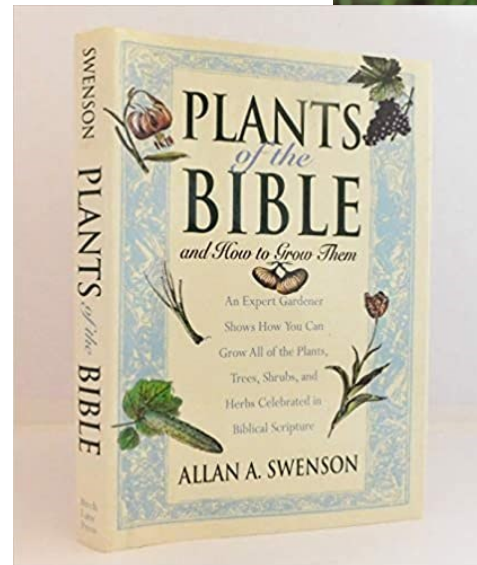


# Flint cobbles flush with ground level





# Planting



Graduate Landscapes



# Tree Suggestions



ALMOND TREE

RENEWAL



OLIVE TREE

PRODUCTIVITY



FIG TREE

LIFE



MYRTLE TREE

RECOVERY







Graduate Landscapes

# CONCEPT B THE GARDEN

## GARDEN DEFINITION:

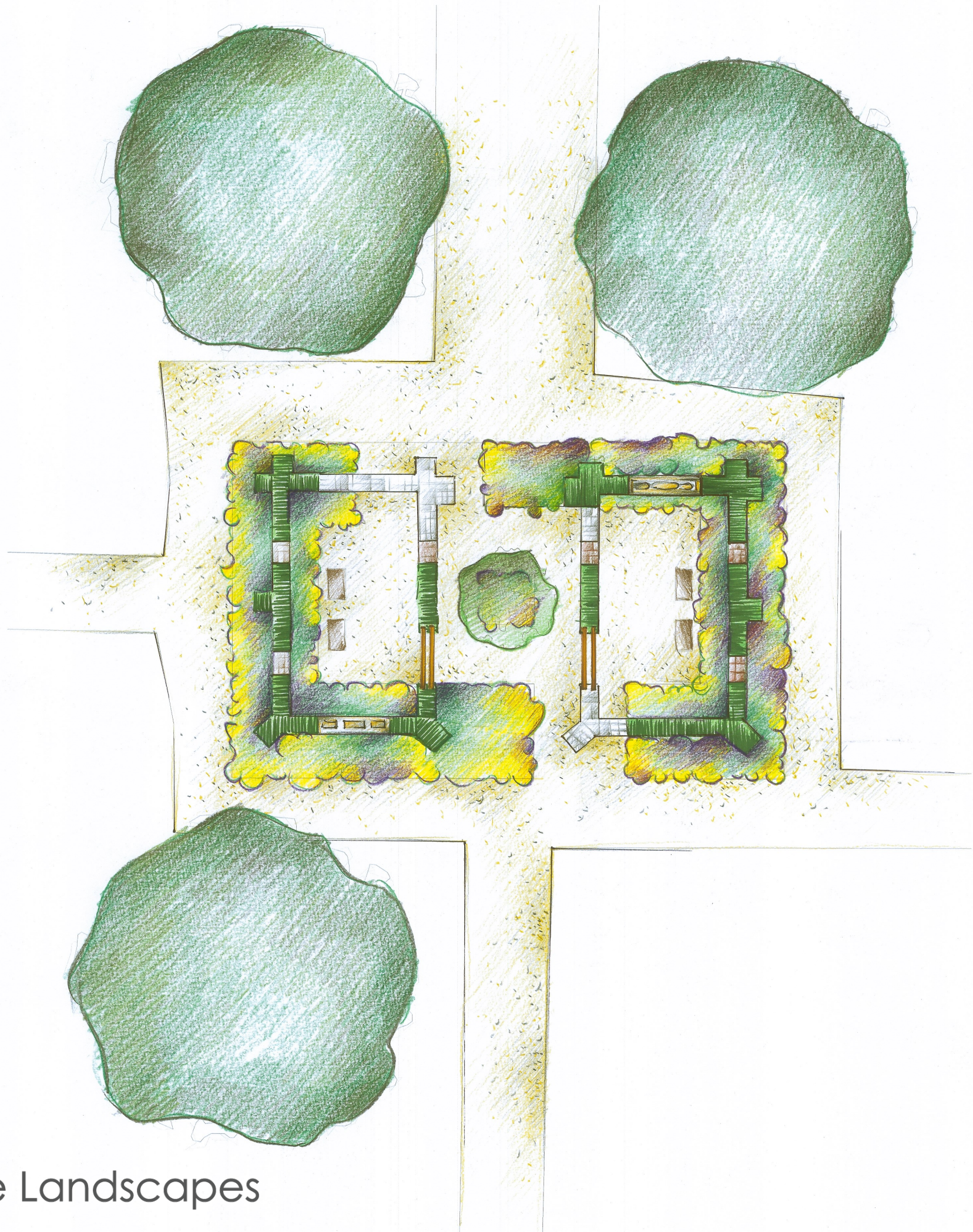
*“Gardens of the Bible were places of beauty, shelter, and sustenance.  
The fruit trees and vines, fragrant herbs and other useful plants, were all key elements of design.  
The Lord God created the first garden, Eden ”*



GOLD  
MEDAL







Graduate Landscapes

Concept B  
The Garden



# Concept B The Garden

Re-purposed flint setts at ground level to mark existing boundaries of the Chapels

Low clipped Taxus (Yew) hedges forming the footprint of the Chapels

Self binding gravel surface

Ground level planting beds edged with metal edging

Information plaques

6no. Columns where windows once were—built from reclaimed flint setts and bricks. 1.7m high, 66cm x 50cm wide

Decorative gable window and stone mullions preserved and stabilised at a lower height

Single stem tree closely related to the Bible as commemorative. Initial suggestions of an Almond tree, an Olive, a Fig, or a Myrtle tree

Decorative gable window at ground level without glazing and stabilised between hedges

2no wooden pergola arches made onsite from the reclaimed wooden roof rafters

Information plaques

Ground level planting beds edged with metal edging

Re-purpose flint setts at ground level to mark existing boundaries of Chapel



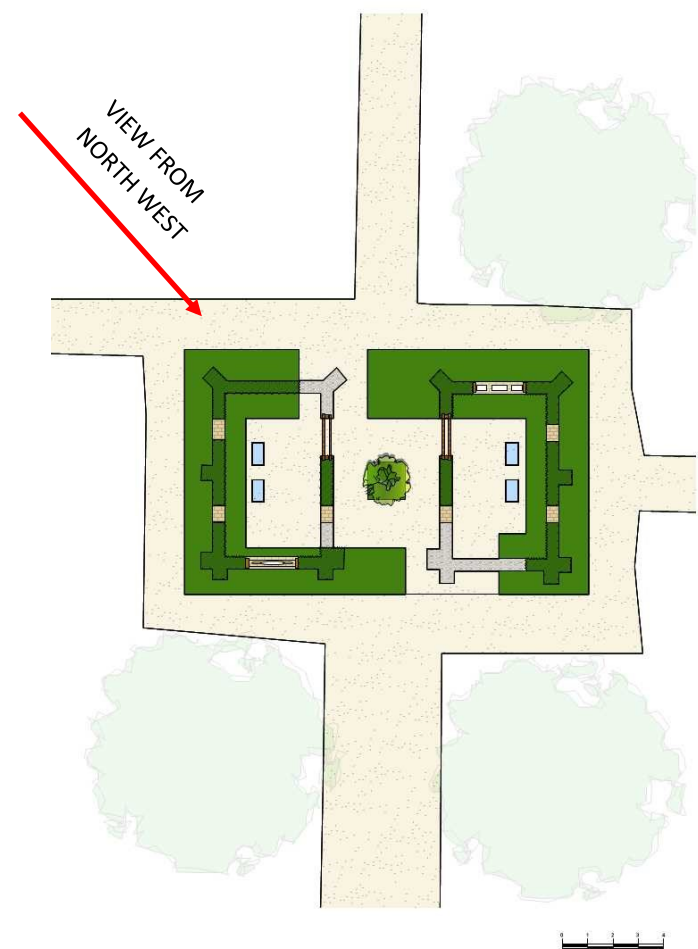
Graduate Landscapes



KEY

- Hedge
- Self binding gravel
- Planted area with metal edging
- Flint cobbles
- Brickwork and flint stonework
- Information/Memorial Plaques
- Wooden archway
- Existing Trees
- New tree





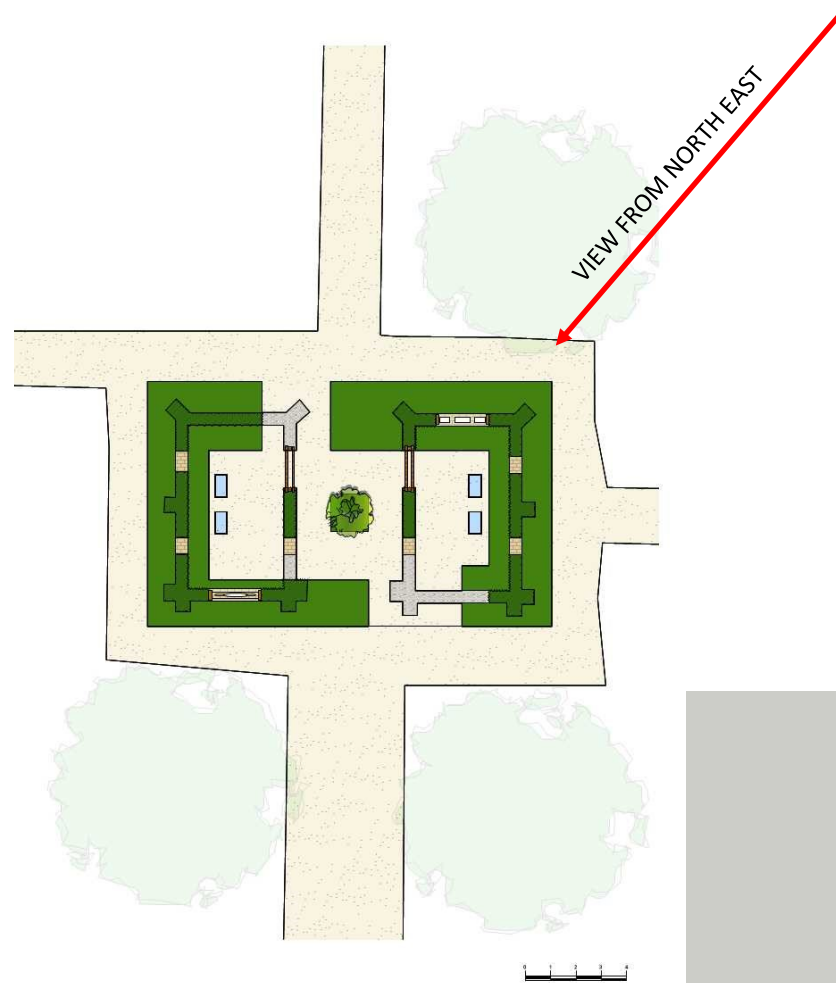
View of 'The Garden' from the North West Corner



Graduate Landscapes

**Concept B**  
**The Garden**





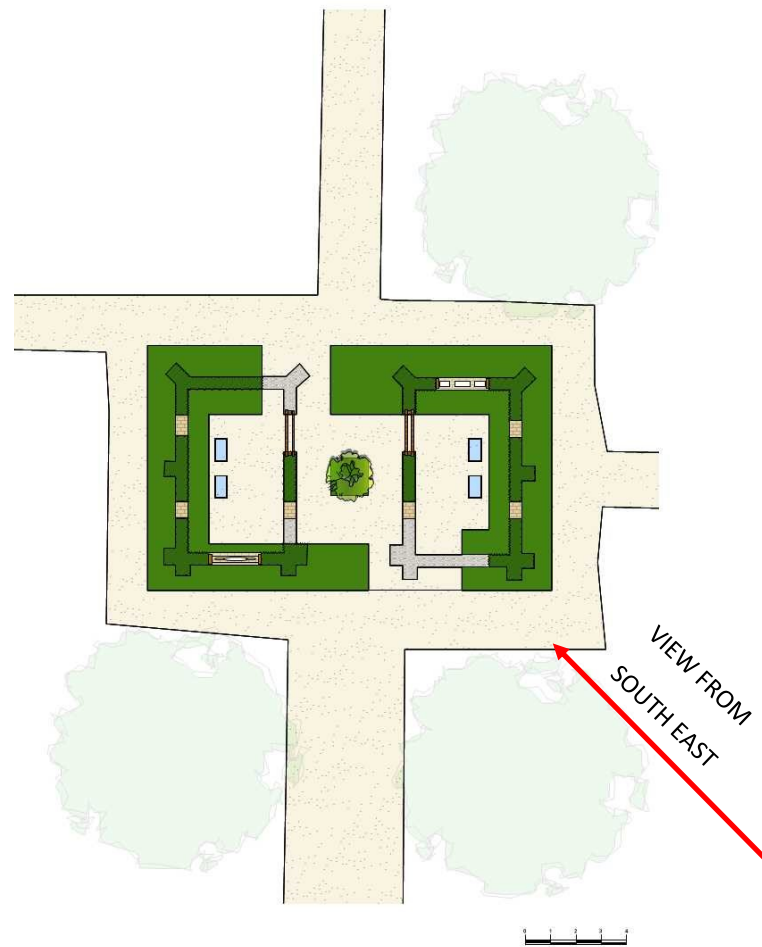
View of 'The Garden' from the North East Corner



Graduate Landscapes

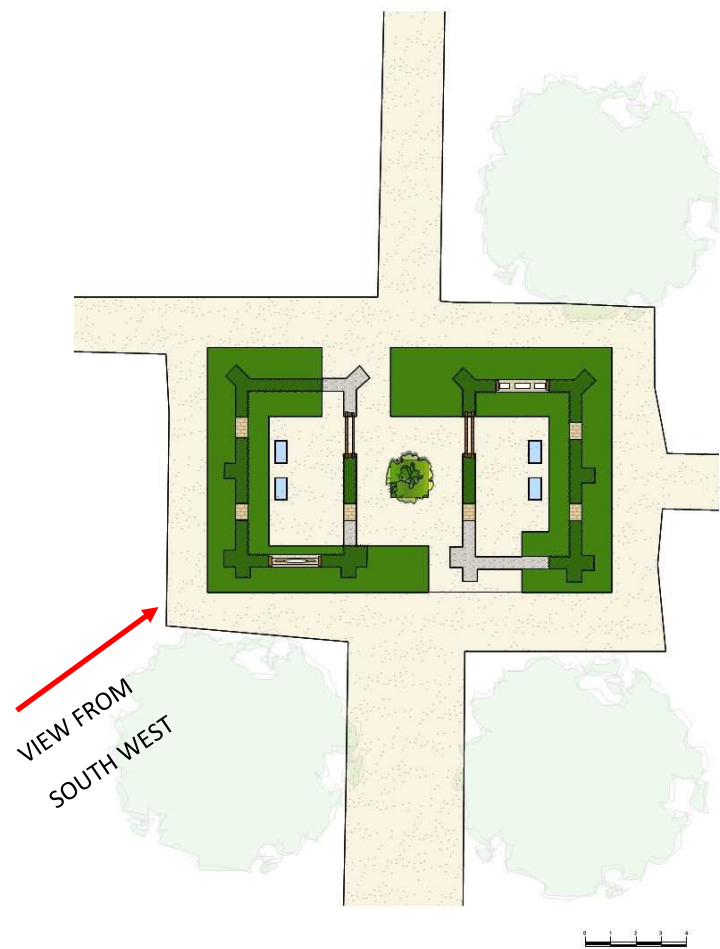
**Concept B**  
**The Garden**





View of 'The Garden' from the South East Corner





View of 'The Garden' from the South West Corner



# Taxus Hedge



Clipped or left loose, IT ties in with the existing yew tree near the Chapels and common in cemeteries for it is slow growing and requires minimal maintenance



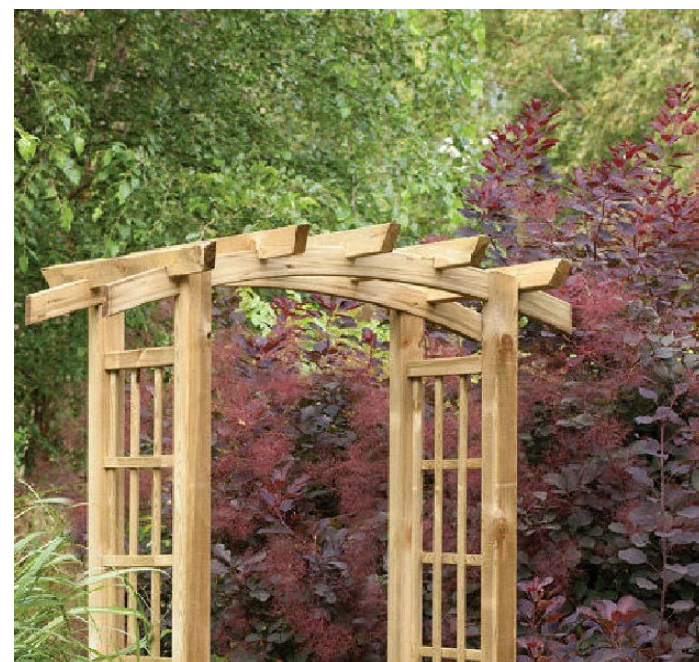


# Wooden Archways



Ideally constructed from the Chapel's own wooden rafters.

Alternatively a new robust structure

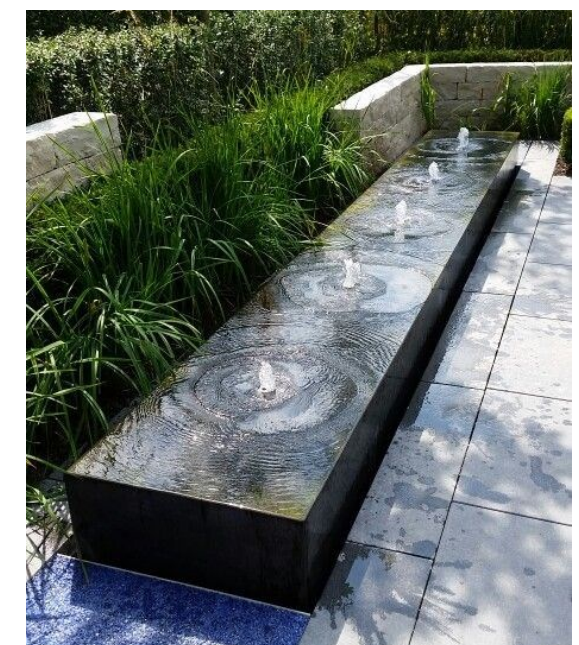


# Brick & Flint Column





# Water Features



Graduate Landscapes





01428 724 080

[info@graduatelandscapes.co.uk](mailto:info@graduatelandscapes.co.uk)

[www.graduatelandscapes.co.uk](http://www.graduatelandscapes.co.uk)



GOLD  
MEDAL



CHAS  
Accredited Contractor  
CHAS.co.uk

SSIP

